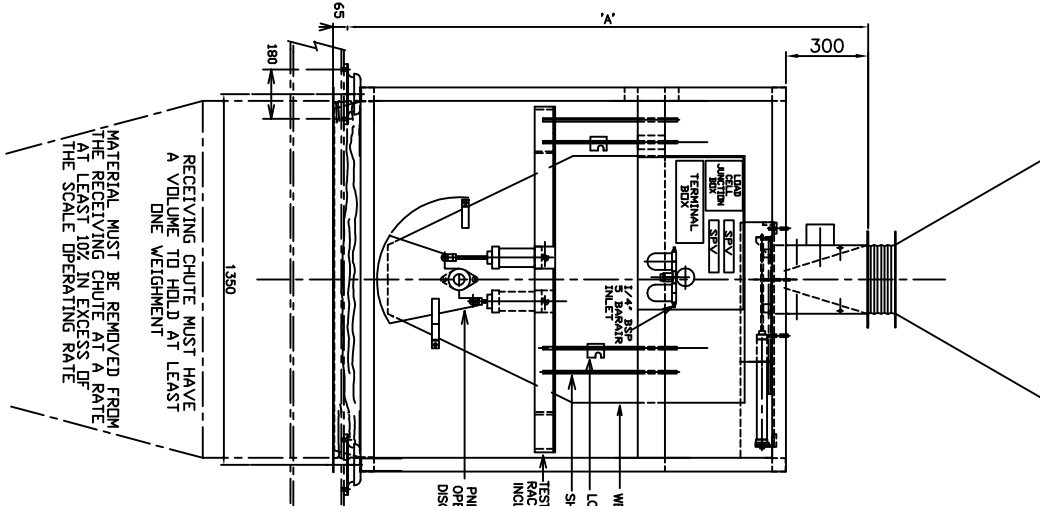
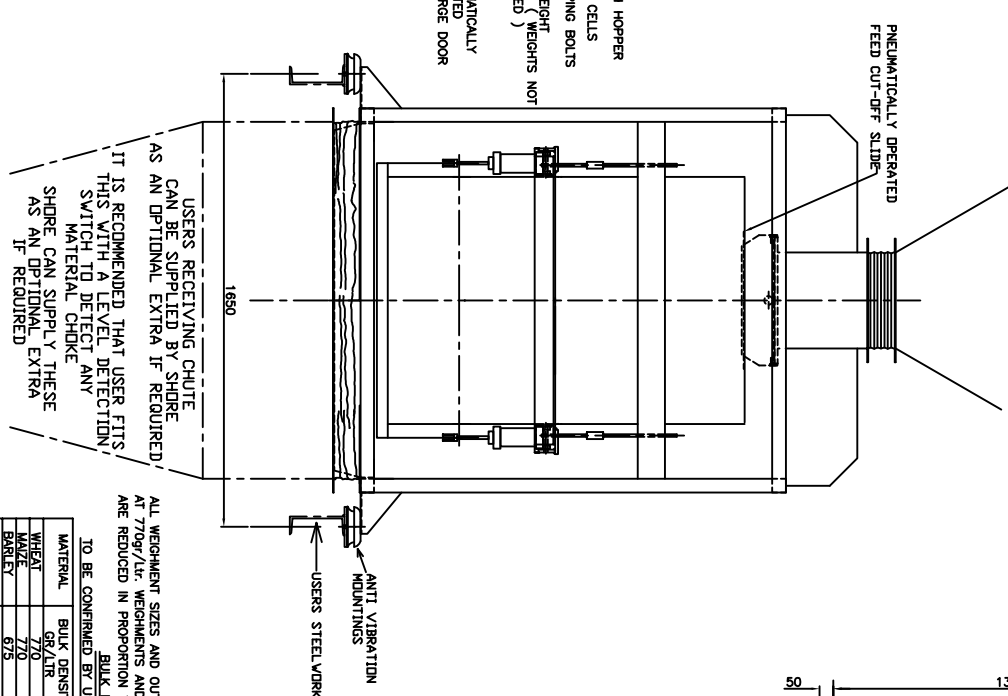
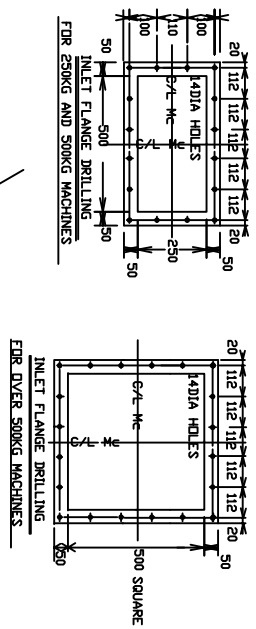


IT IS RECOMMENDED THAT USER FITS THIS SWITCH WITH A LEVEL DETECTION MATERIAL CHOKE SHORE CAN SUPPLY THESE AS AN OPTIONAL EXTRA IF REQUIRED CHANGES IN LEVEL OF MATERIAL IN THE INFEED HOPPER WILL NOT AFFECT THE SCALE ACCURACY



RECEIVING CHUTE MUST HAVE A VOLUME TO HOLD AT LEAST ONE WEIGHTMENT MATERIAL MUST BE REMOVED FROM THE RECEIVING CHUTE AT A RATE AT LEAST 10% IN EXCESS OF THE SCALE OPERATING RATE

T.A.SHORE CO.LTD. COPYRIGHT © 1998
 DIMENSIONS TO BE REPRODUCED ON NON METRIC SUPPLIERS WITH ALLOWABLE VARIATION:
 ALL DIMENSIONS IN MILLIMETRES UNLESS OTHERWISE SPECIFIED
 ALL DIMENSIONS IN INCHES UNLESS OTHERWISE SPECIFIED
 ALL DIMENSIONS IN METRES UNLESS OTHERWISE SPECIFIED
 ALL DIMENSIONS IN FEET UNLESS OTHERWISE SPECIFIED
 ALL DIMENSIONS IN YARDS UNLESS OTHERWISE SPECIFIED
 ALL DIMENSIONS IN MILES UNLESS OTHERWISE SPECIFIED
 ALL DIMENSIONS IN KILOMETRES UNLESS OTHERWISE SPECIFIED
 ALL DIMENSIONS IN METRES UNLESS OTHERWISE SPECIFIED
 ALL DIMENSIONS IN FEET UNLESS OTHERWISE SPECIFIED
 ALL DIMENSIONS IN YARDS UNLESS OTHERWISE SPECIFIED
 ALL DIMENSIONS IN MILES UNLESS OTHERWISE SPECIFIED
 ALL DIMENSIONS IN KILOMETRES UNLESS OTHERWISE SPECIFIED



USERS RECEIVING CHUTE CAN BE SUPPLIED BY SHORE AS AN OPTIONAL EXTRA IF REQUIRED. IT IS RECOMMENDED THAT USER FITS THIS SWITCH TO DETECT ANY MATERIAL CHOKE SHORE CAN SUPPLY THESE AS AN OPTIONAL EXTRA IF REQUIRED

NOTE: INTERCHANGEABILITY WITH M3-0153-48 TO BE MAINTAINED

REV	DATE	BY	CHKD	APP'D	DESCRIPTION
3	12/98	SCR	SCR	SCR	PUT INTO STANDARD DRILLING CHANGING
0	12/98	SCR	SCR	SCR	INLET ALTERED TO FIT THE 140MM HOLES

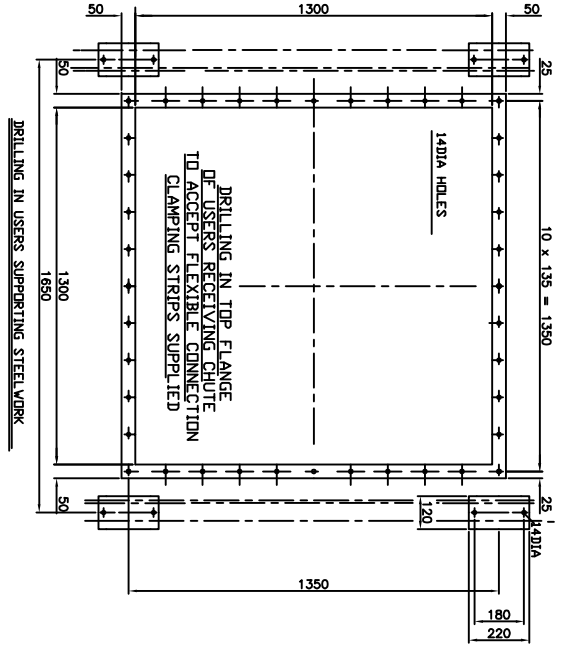
MATERIAL	BULK DENSITY GR/LTR	LB/CUFT	LB/BU
WHEAT	770	48	82
MAIZE	770	48	82
BARLEY	770	48	82
DAISY	475	32	56
MAIT	500	32	42

ALL WEIGHTMENT SIZES AND OUTPUTS ARE BASED ON CLEAN WHEAT AT 770g/ltr. WEIGHTMENTS AND OUTPUTS FOR LIGHTER GRAINS ARE REDUCED IN PROPORTION TO THEIR BULK DENSITIES

TO BE CONFIRMED BY USER FOR EACH CONTRACT

INQUIRY SCALE CAPACITY	MAX OUTPUT TPH	A	WEIGH HOPPER VOLUME	SCALE AIR REQUIRED PER TON AT 5 BAR
250KGS	80	1600	328	500KGS
500KGS	120	1900	650	700KGS
1000KGS	240	2700	1300	1075KGS
				321

REFER TO SHORE LEAFLET 0108/90 FOR OTHER SIZES AND CAPACITIES OF WEIGH HOPPERS WHICH CAN BE USED WITH THE MODULE AND FEED CUT-OFF GATE SHOWN ABOVE



MACHINE NOTES
 VARIOUS CONTROLLER OPTIONS ARE AVAILABLE - REFER TO T.A.SHORE Co LTD
 THE CONTROLLER SHOULD BE INSTALLED WITHIN 20M (IN WIRE LENGTH) OF THE MACHINE
 LOADCELL CABLES SHOULD BE SEGREGATED FROM ALL OTHER CABLES AND SHOULD BE RUN IN THEIR OWN SEPARATE STEEL CONDUITS. THE CONDUIT SHOULD BE EARTHED TO MAINS EARTH POTENTIAL.
 THE LOAD CELL CABLES SHOULD BE SCREENED WITH AN OVERALL BRAIDED SCREEN AND SHOULD HAVE A CORE CROSS SECTIONAL AREA OF AT LEAST 0.5mm²
 OTHER CABLES SHOULD BE SEGREGATED FROM WIRING CARRYING POWER AT VOLTAGES OTHER THAN 110V.
 THE STANDARD MACHINE IS SUPPLIED WITHOUT COVERS OR GUARDS AND SHOULD BE LOCATED IN A LOCKED ROOM HAVING DUST EXTRACTION

T.A.SHORE Co Ltd COPYRIGHT © 1998
 CUSTOMER: STANDARD
 NOTTINGHAM ENGLAND
 TITLE: INTAKE AND OUTLOADING SCALE
 SCALE: 1:10
 SHEET: 1/1