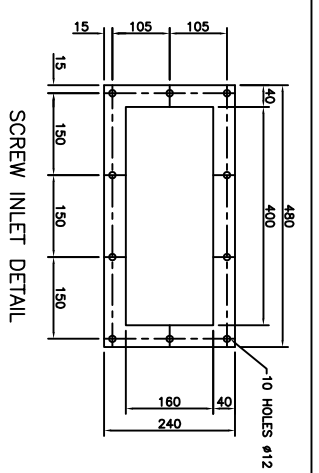
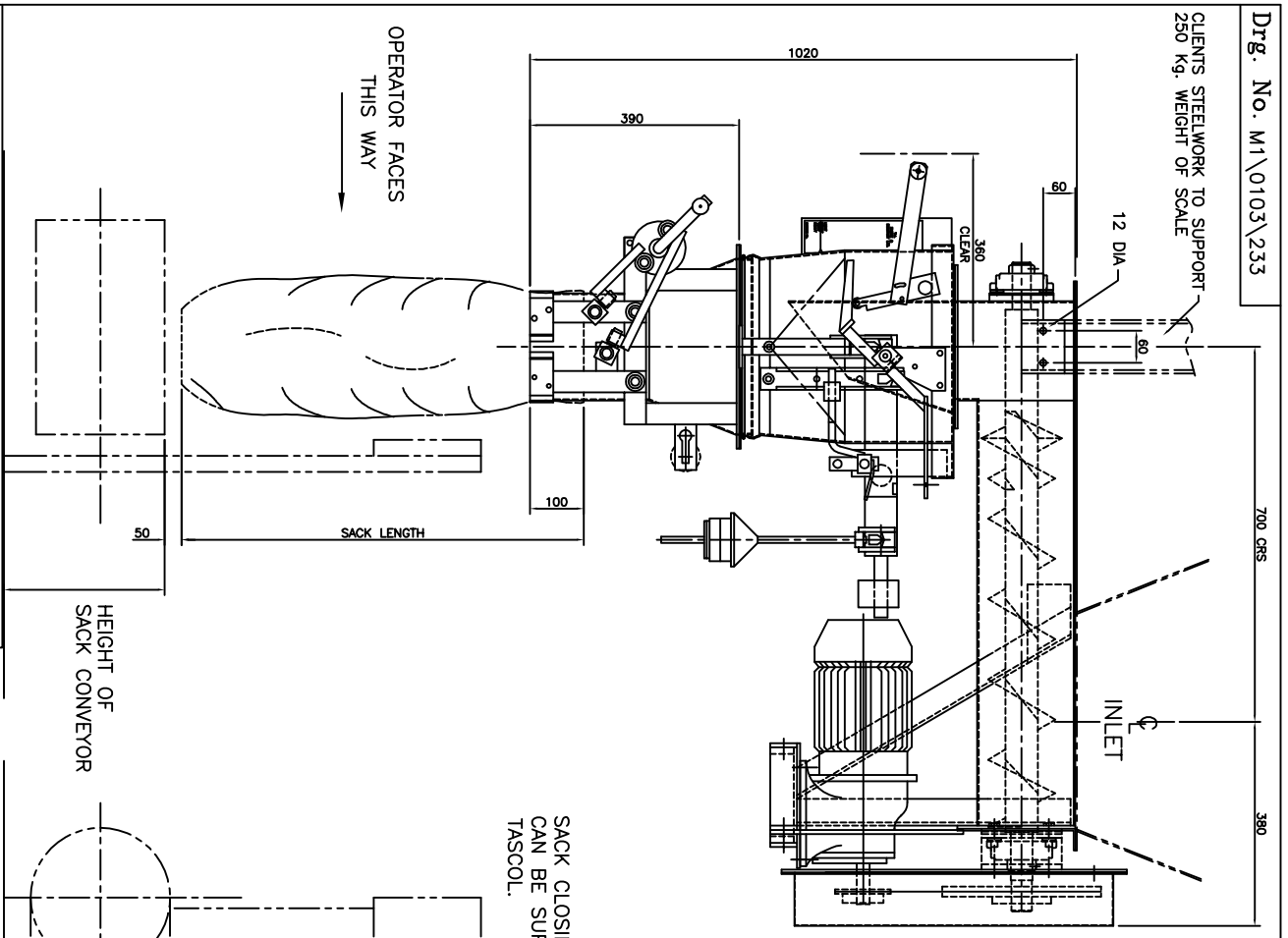
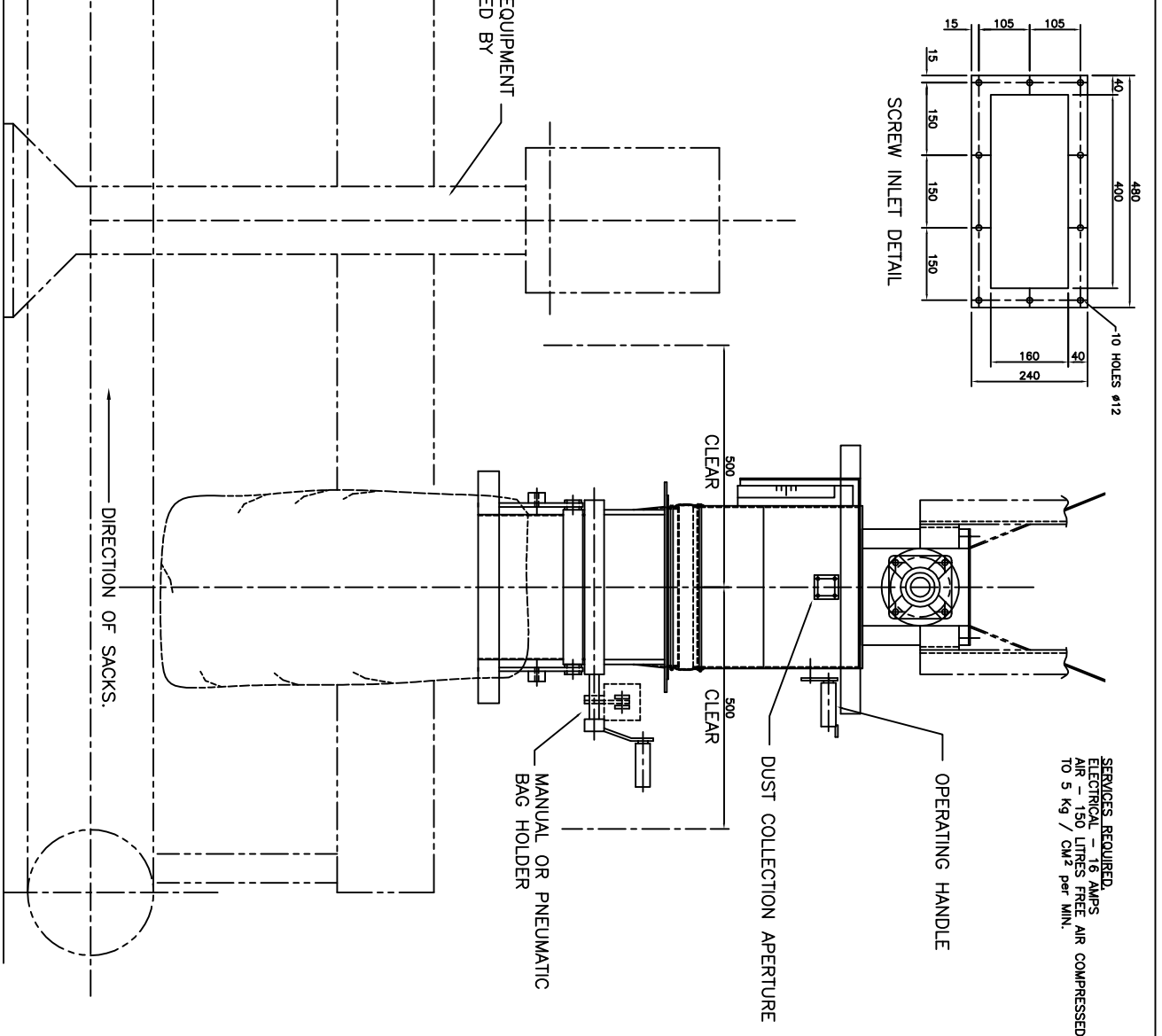


CLIENTS STEELWORK TO SUPPORT
250 Kg. WEIGHT OF SCALE



SERVICES REQUIRED:
ELECTRICAL - 16 AMPS
AIR - 150 LITRES FREE AIR COMPRESSED
TO 5 Kg / CM² PER MIN.



T.A.SHORE COL.LTD. COPYRIGHT © 1998
MACHINES TO BE PLACED ON NON WORKING SUPPORTS WITH ADEQUATE VIBRATION.
MAX. AMBIENTURE 45° WITH MAX. FREQUENCY 4.5 Hz.
ALTERNATE AMBIENTURE TEMPERATURES - 10 DEGREES C TO + 40 DEGREES C.
HUMIDITY NOT TO EXCEED 95% FOR NON-CONDENSING.
CONVEYOR AND CONTAINERS SHOULD BE DESIGNED TO HANDLE 5 TO 250 KG BAGS OR BAGGAGES. ALSO NATURAL & ARTIFICIAL LIGHT.
ELECTRICAL CONNECTIONS AND WIRING SHOULD BE MADE IN ACCORDANCE WITH THE RELEVANT STANDARDS. THE MOTOR SHOULD BE FITTED WITH A THERMAL PROTECTION OF 1.5 TIMES THE FULL LOAD CURRENT. THE MOTOR SHOULD BE FITTED WITH A THERMAL PROTECTION OF 1.5 TIMES THE FULL LOAD CURRENT.
OPERATING TEMPERATURES SHOULD NOT EXCEED 10 DEGREES C PER HOUR.
OPERATING CURRENT AND MOTOR PROTECTION SHOULD NOT EXCEED 10 DEGREES C PER HOUR.
OPERATING VOLTAGE AND FREQUENCY SHOULD NOT EXCEED 10 DEGREES C PER HOUR.
OPERATING AIR AND COMPRESSOR SHOULD NOT EXCEED 10 DEGREES C PER HOUR.
OPERATING AIR AND COMPRESSOR SHOULD NOT EXCEED 10 DEGREES C PER HOUR.
OPERATING AIR AND COMPRESSOR SHOULD NOT EXCEED 10 DEGREES C PER HOUR.
OPERATING AIR AND COMPRESSOR SHOULD NOT EXCEED 10 DEGREES C PER HOUR.
OPERATING AIR AND COMPRESSOR SHOULD NOT EXCEED 10 DEGREES C PER HOUR.
OPERATING AIR AND COMPRESSOR SHOULD NOT EXCEED 10 DEGREES C PER HOUR.
OPERATING AIR AND COMPRESSOR SHOULD NOT EXCEED 10 DEGREES C PER HOUR.

REV	1	DATE	12/01/00	NAME	WR
GENERAL UPDATE CLEARANCES ADDED					
REV	0	DATE	10/98	NAME	SCR

T.A.SHORE Co Ltd COPYRIGHT © 1998		THIS DRAWING AND COPIES OF IT ARE THE PROPERTY OF TASCOL AND MUST NOT BE COPIED OR SIMULATED TO THIRD PARTIES WITHOUT THE WRITTEN CONSENT OF T.A.SHORE CO LTD.	
T.A.SHORE Co Ltd. ENGLAND		NOTTINGHAM ENGLAND	
TITLE 133 SACK FILLING MACHINE PLUS SCREW FEEDER		SCALE 1:5	
Dwg. No. M1\0103\233		SHEET 1/1	